

Quick Installation Guide

INR-440
200-Channel 12-Bay RAID Rackmount Standalone NVR
with Redundant Power Supply

BEFORE YOU START

Thank you for purchasing ACTi Standalone Network Video Recorder. This guide contains all the information you need to quickly set up ACTi INR server system via local interface.

For detailed instructions on installation, operation and how to log in to INR as a web client, please refer to the product manuals provided on ACTi corporate website.

The items below are prerequisite for installation:

- Network cameras
- Network cables
- Network switch
- Monitor (with VGA cable)
- USB or PS/2 mouse
- At least one ACTi-certified 3.5-inch SATA hard disk

Find the certified disk models at <http://www.acti.com/hddselector>

HARDWARE INSTALLATION

UNPACK

This package contains:

- INR x 1
- Rail Kit x 1
- Quick Installation Guide x 1
- Warranty Card x 1
- Accessory Pack x 2

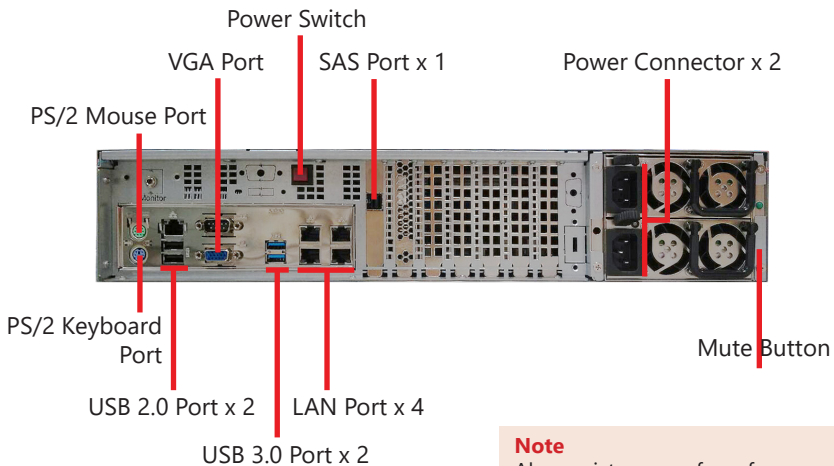


AT A GLANCE

Front Panel



Rear Panel




Note
Above pictures are for reference only. Actual device may slightly vary in connector placement and quantity. Actual device sample takes precedence.

RACKMOUNT THE UNIT


This unit is designed to be mounted on a standard server rack, which occupies 2U (3.5") of vertical space. Install this unit into the rack with the supplied rail kit using the screws provided.

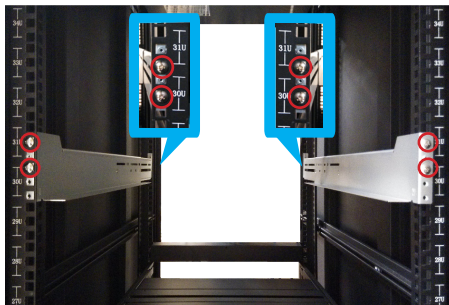
Step 1

Loosen the screws  locked on both rails.




Step 2


In the rack, adjust the rails' length to make them align with the holes on the posts, and use eight screws  to secure them onto the front and rear posts.

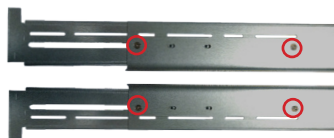


Step 3

Put the unit atop the shelf surface, and use two screws  to secure it to both front posts.



Tighten the screws  loosen from **Step 1** on the rails to fix their length.



HARD DISK INSTALLATION

Make sure this unit is turned off, and insert the hard disks into the disk bays following the sequence of slot numbers shown on the back of **Smart Panel**.



REMOVE THE TRAY

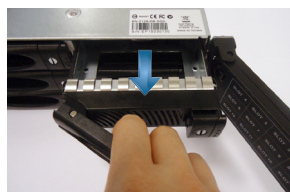
Step 1

Press the key lock, and the hinge tab will pop out by itself.



Step 2

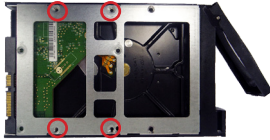
Hold the tab lever and pull out the empty tray.



MOUNT THE DISK

Step 3

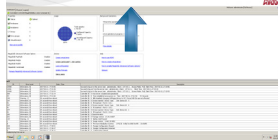
Secure the hard disk on the tray with the provided disk screws and make sure the SATA connector faces outwards.



INSTALL THE TRAY

Step 4

Place your thumb on the key lock to push the tray into position in the chassis.



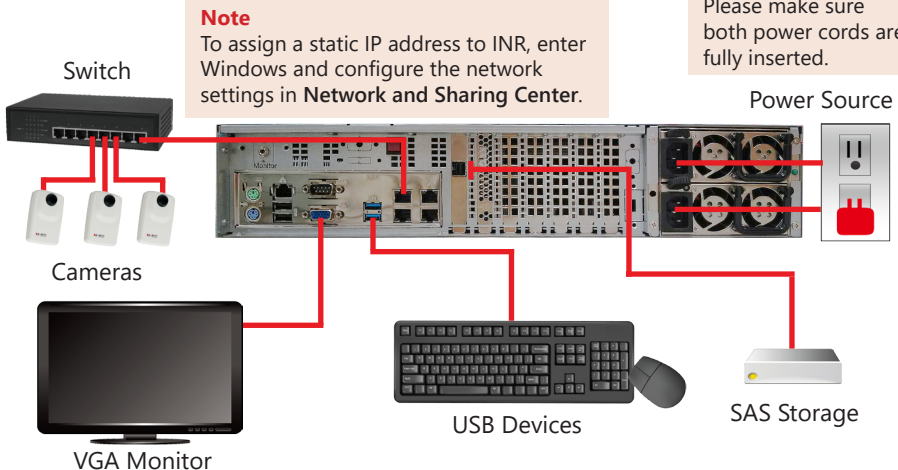
Step 5

Press the hinge tab until it clicks into place.

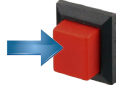


CONNECT THE DEVICES

The example below displays a network consisting of only INR, network cameras and required peripherals. Please remember to enable the DHCP service on your router for INR to obtain an IP address automatically.

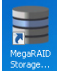


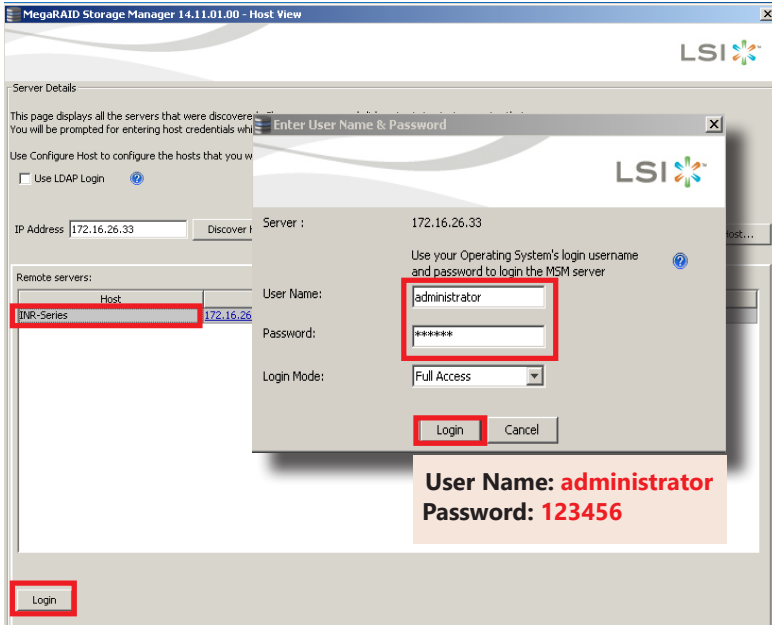
START-UP

1. On the unit's rear panel, press down **Power Switch**  to power on this unit.
2. On Windows logon screen, input the password "123456" to log in as an administrator.

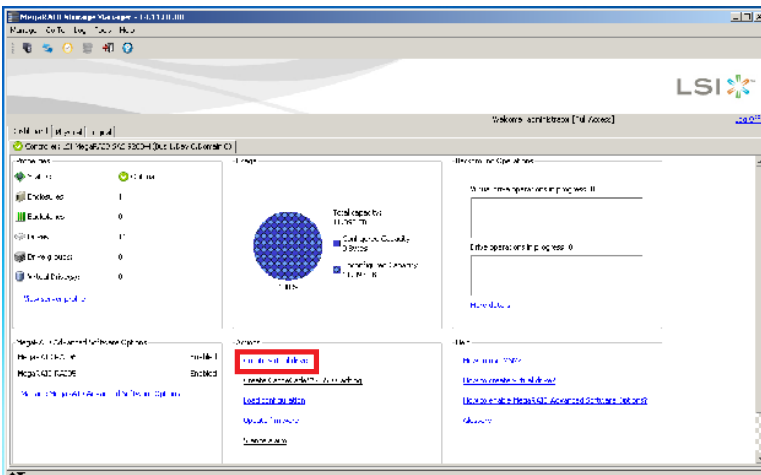
CREATE HARDWARE RAID

As this unit supports hardware RAID configuration, you can make disk arrays using the bundled software utility.

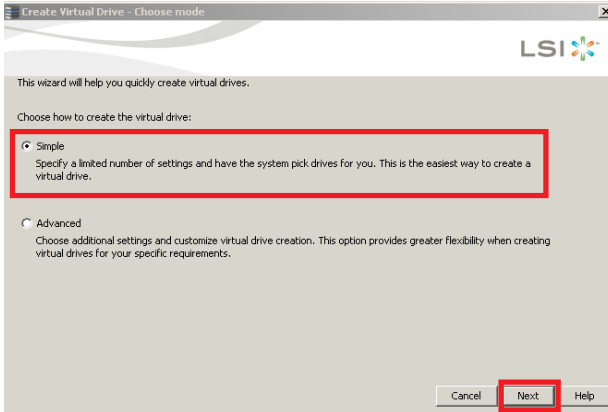
1. On Windows Desktop, double-click on the shortcut  to initialize the RAID management utility.
2. On **Remote servers** list, select **"INR-Series"** and click on **"Login"**. On logon window, input the credentials and click on **"Login"**.



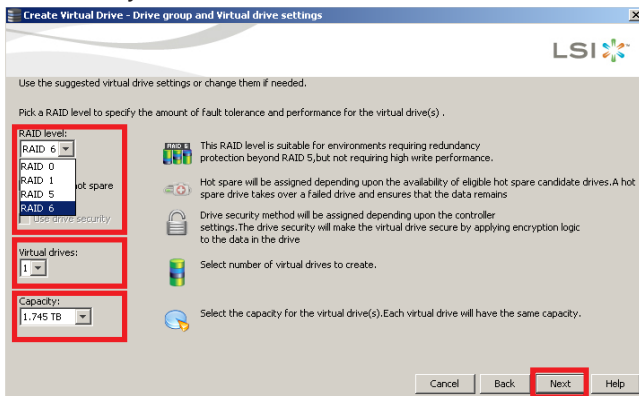
3. On **Dashboard** page, click on **"Create virtual drive"**.



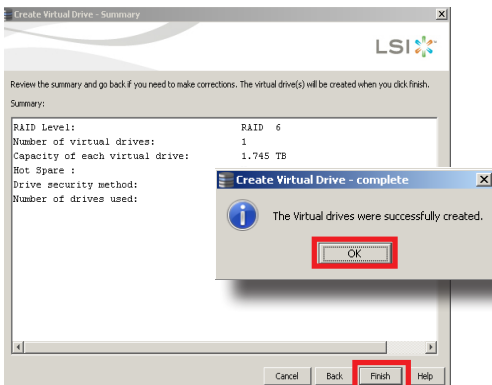
4. Choose “Simple” mode and then click on “Next”.



5. Select the RAID level, number of Virtual drives (arrays) and the Capacity of the array, and then click on “Next”.



On confirmation window, click on “Finish” to start building arrays.



SOFTWARE CONFIGURATION

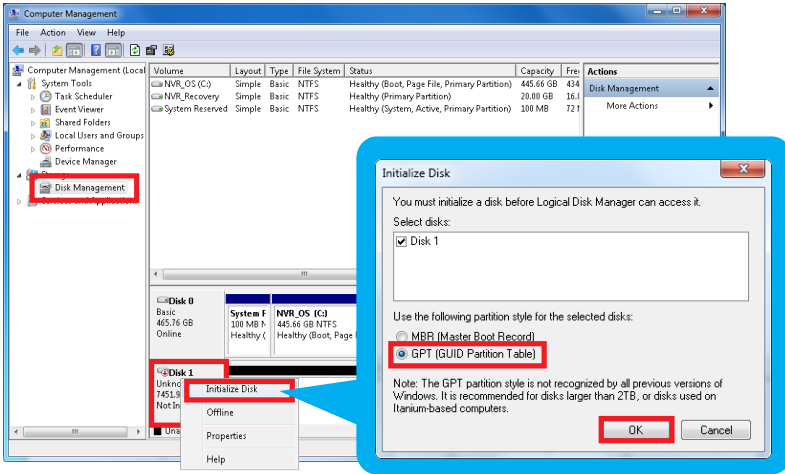
CREATE DISK VOLUMES

Use **Windows Disk Management** to create disk volumes so that INR can access the available storage space.

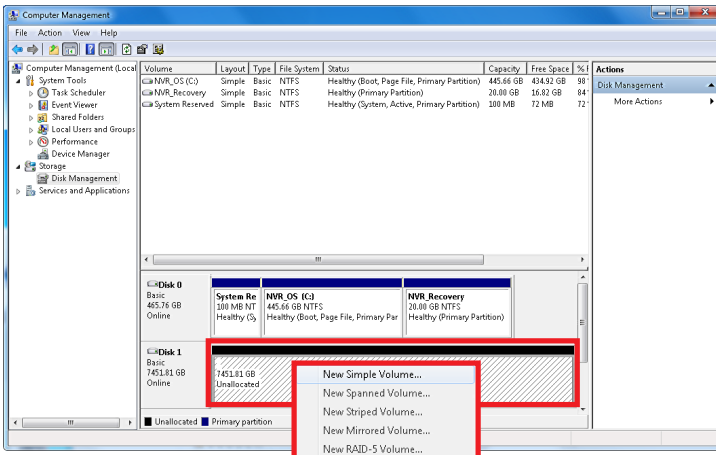
1. In Windows Search Box, search and enter *“computer management”*.



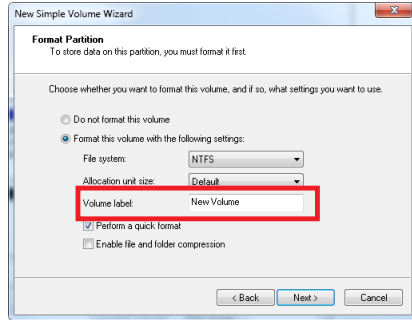
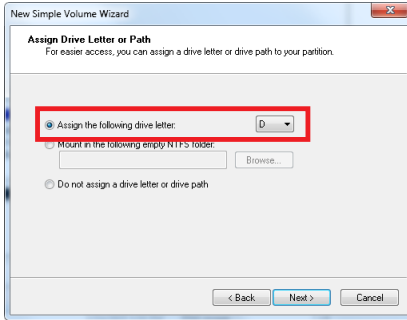
2. Select **“Disk Management”**, right-click on a disk title and select **“Initialize Disk”**, choose **“GPT”** as the partition style and click on **“OK”**.



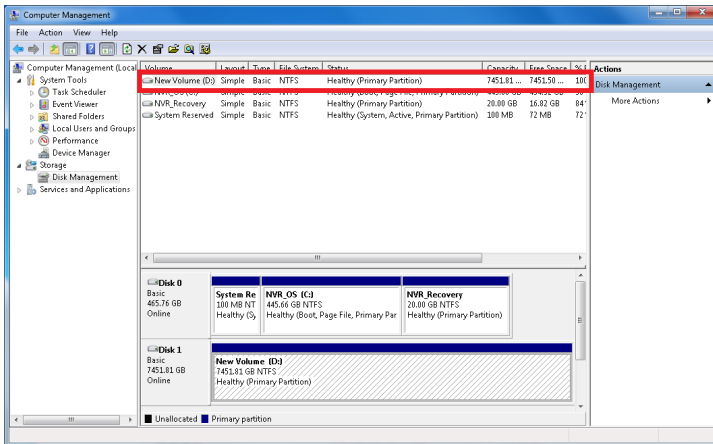
3. Right-click on the initialized disk and select the volume type to make a new volume.



4. On New Volume Wizard window, make sure you assign the desired drive letter and give a proper label name to this volume.



5. After the volume is created, it is shown on volume unit list and is ready for recording.




Note

To make a Striped volume, a Mirrored volume or a RAID-5 volume, it is recommended to select disks of the same model and capacity.

Note

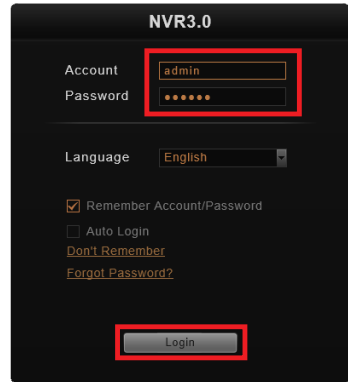
For detailed instructions on choosing the RAID types and troubleshooting hard disk issues, please refer to System Administrator's manual provided on ACTi Download Center at <http://www.acti.com/downloadcenter>

LOG IN

On Windows Desktop, double-click on  to enter NVR interface. Input the default account and password to log in.

Account: admin
Password: 123456

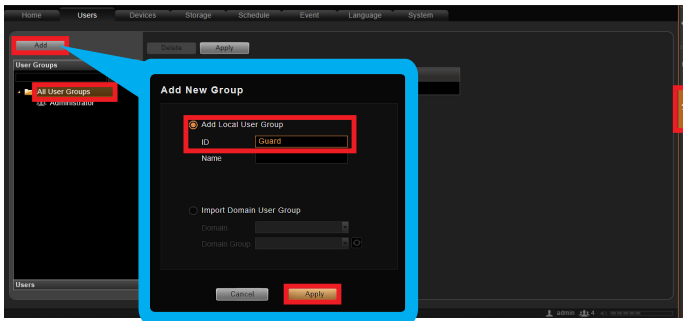
"123456" is the default password of NVR administrator's user account. For security reasons, please remember to replace it with a new one.



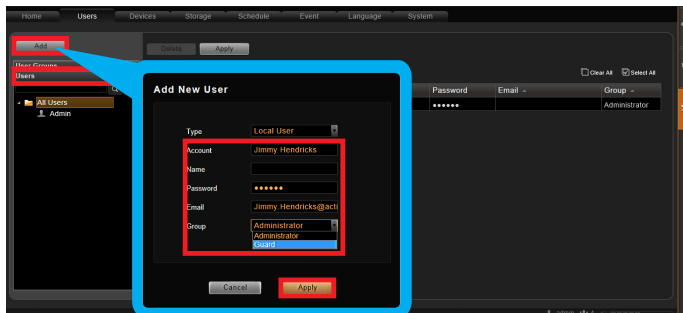
CREATE USERS

On NVR screen, click **Setup** button to enter **Setup** page and then **Users** tab.

1. Select "**User Groups**", click "**Add**" to start adding a new user group.
2. Input group ID and click "**Apply**".

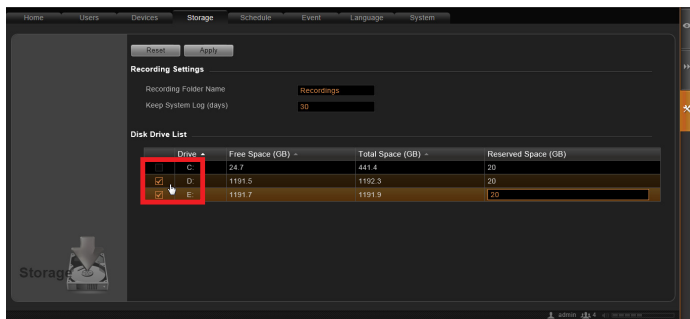


3. Click on the title bar of **Users** panel, click "**Add**" to start adding a new user.
4. Input user's **Account**, **Password**, **Email** address and select its User **Group**, and then click "**Apply**".



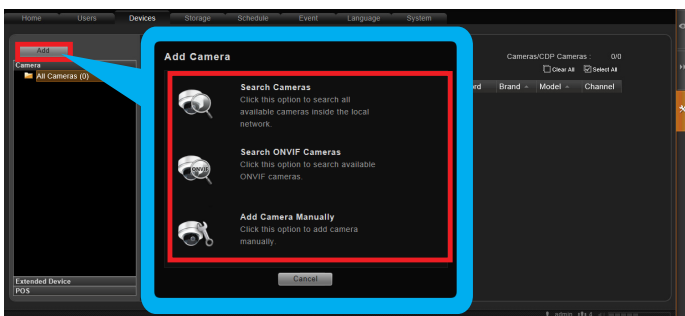
SELECT STORAGE DRIVES

1. Go to **Setup** page and then **Storage** tab.
2. On **Disk Drive List**, de-select C Drive, and select other storage drives.
3. Click **"Apply"**.



ADD CAMERAS

1. Go to **Setup** page and then **Devices** tab.
2. Click **"Add"**.
3. Choose a search method based on your network environment and camera brand.

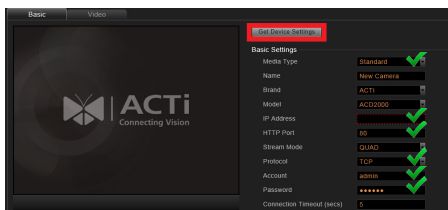
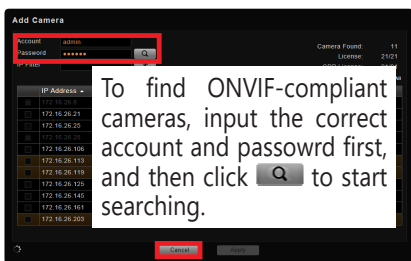


Search Cameras

Use **"Search Cameras"** to auto-search the network for ACTi cameras, or **"Search ONVIF Cameras"** for ONVIF-compliant cameras of any brand. After selecting your desired cameras, click **"Apply"**.

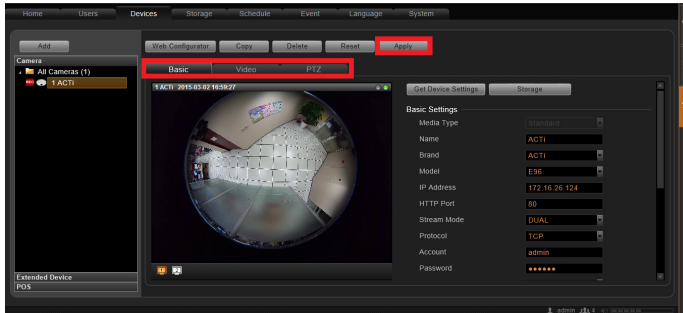
Add Camera Manually

If you are adding a camera located in another network, use **"Add Camera Manually"**. Fill in **Media Type, Protocol, IP Address, HTTP Port, Account** and **Password**. Finally, click **"Get Device Settings"** and then **"Apply"**.



CONFIGURE CAMERA SETTINGS

1. Go to **Setup** page and then **Devices** tab. Choose the camera from **Camera List**.
2. Select **Basic**, **Video**, **PTZ**, or **Preset Tour** tab to configure related settings.



3. Click "**Apply**" to save the settings.

SET RECORDING SCHEDULE

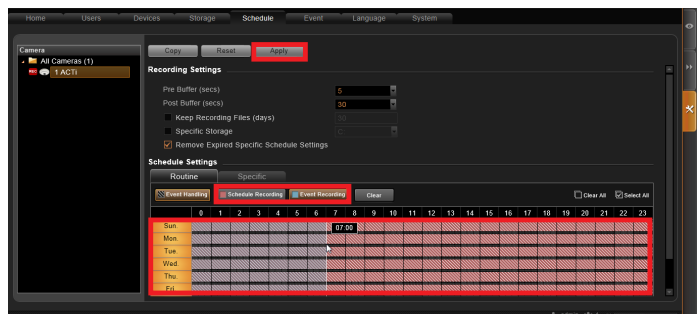
The recording service automatically starts full-time recording for a newly added camera. You can modify the recording schedule to suit your needs.

1. Go to **Setup** page and then **Schedule** tab. Select the camera from **Camera List**.
2. Choose a recording mode: **Schedule Recording** or **Event Recording**

Schedule Recording: Records video continuously during the scheduled session.

Event Recording: Records video based on specific triggers such as when a motion is detected by the camera.

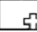

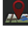



3. Drag on the time table to define the time session.
4. Click "**Apply**".



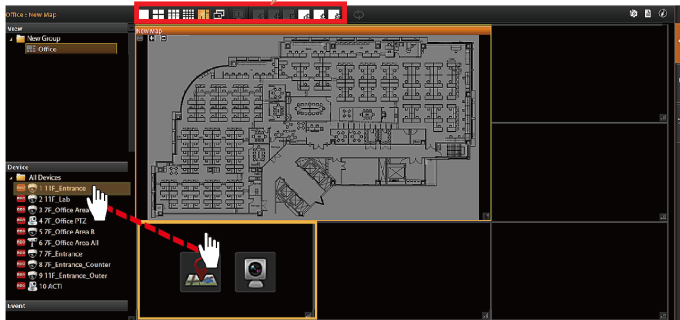
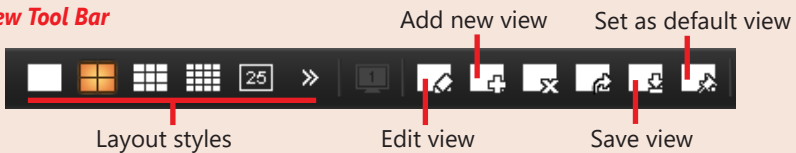
Note

If you have any question during system installation, please feel free to contact our engineers via **ACTi Customer Help Desk** platform at <http://www.acti.com/CHD>

CUSTOMIZE VIEWS

1. Go to **Live View** page. On top of the screen, click  on view tool bar to create a new layout, then click  to enter edit mode.
2. Select a layout style.
3. To add a camera view, pull a camera from **Camera List** to a channel. To add a map view, select a channel and click , upload the map, drag the lower right corner  to adjust channel size.
4. On view tool bar, click  to save this view.
5. You can set this view as default view by clicking on .

View Tool Bar



VALIDATION



To check live streaming of all channels, go to Live View page, double-click on  on **Camera List**.



To check recording, go to **Playback** page, and then select (double-click) a view from **View List** or a camera from **Camera List**. Drag on the time bar to see the recorded video.

Due to continuous product improvements, some contents may have changed from the time this documentation was printed. You can download the latest user documentation, which shall prevail over the printed version provided in the package, from <http://www.acti.com/downloadcenter>.